

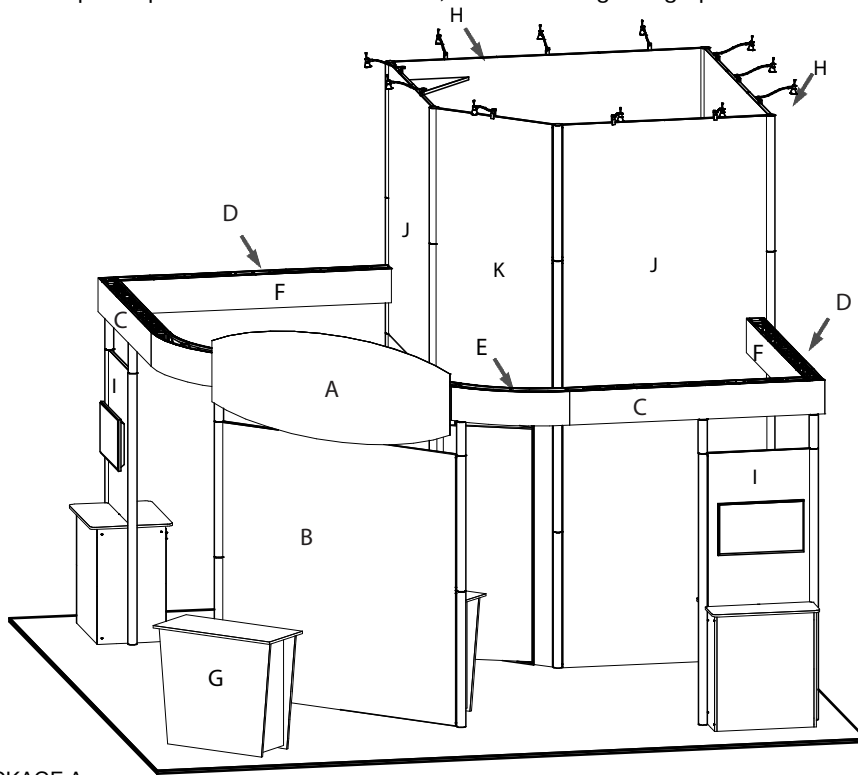


KIT AS SHOWN INCLUDES

- (1) Main mural graphic with profile cut header and running perimeter graphic truss covers.
- (1) Private meeting area, with locking door.
- (11) arm lights.
- (1) "EV2" standalone counter, 46"w x 20"d black laminate top, choice of sintra sides or graphics.
- (1) "EV2" double wide standalone counter behind main mural, 84"w x 20"d black laminate top, choice of sintra sides or graphics.
- (2) "EV2" double sided box workstation counter with in-wall monitor mount, black laminate top, 34.5"w x 13"d each side. White laminate counter sides.

CHOICE of black, white or gray sintra provided standard for all solid infill walls that do not have graphics, unless described otherwise.

- * White laminate standard for EV2 Wall Counter sides. Front may be choice of sintra colors or printed graphic.
 - White laminate standard for EV2 Standalone Counter front. Sides may be choice of sintra colors or printed rigid graphic.
- Consult your account rep for options. Additional elements, merchandising and graphics are available.



GRAPHICS - PACKAGE A

- A. - (1) 94"w x 36"h, rigid. Refer to header template provided.
- B. - (2) 92"w x 92"h, rigid. Bottom 40" of inside facing graphic will be obscured by counter.
- C. - (2) 128"w x 11.5"h, flexible.
- D. - (2) 97.75"w x 11.5"h, flexible.

GRAPHICS - PACKAGE B

Package A, PLUS

- E. - (4) 32.875 "w x 40"h, standard or backlit graphic front, flexible, fabric or rigid.
- G. - (1) 40"w x 35"h profile cut sintra counter graphic
- H. - (2) 103.5"w x 184"h, rigid.

GRAPHICS - PACKAGE C

Package A and B, PLUS

- I. - (4) 34.5"w x 52"h.
- J. - (2) 69"w x 184"h, rigid.
- K. - (1) 46"w x 184"h, rigid.

KIT PACKAGE PRICING DOES NOT INCLUDE chairs, benches, tables, computers, monitors/cables, and carpet. Additional elements, merchandising and graphics are available through your account representative.

Please follow our graphic file submission guidelines for all printed elements to avoid resubmission requests and delay. Allow at least 10 business days for graphic production.



Quesada Cigars

Quesada Cigars

Quesada Cigars

Quesada Cigars

Quesada
40th
ANNIVERSARY



Quesada Cigars

Quesada Cigars

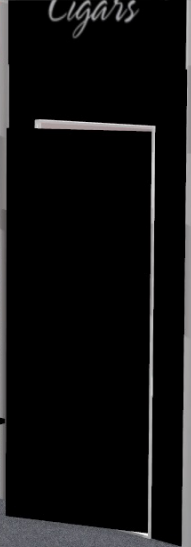
Quesada Cigars

Quesada Cigars

Quesada Cigars



Quesada Cigars





Quesada Cigars

Quesada Cigars

PREMIUM CIGAR
19 74
**QUESADA
KEG**
IMPORTED
ESTELI NICARAGUA

Quesada
40th
ANNIVERSARY

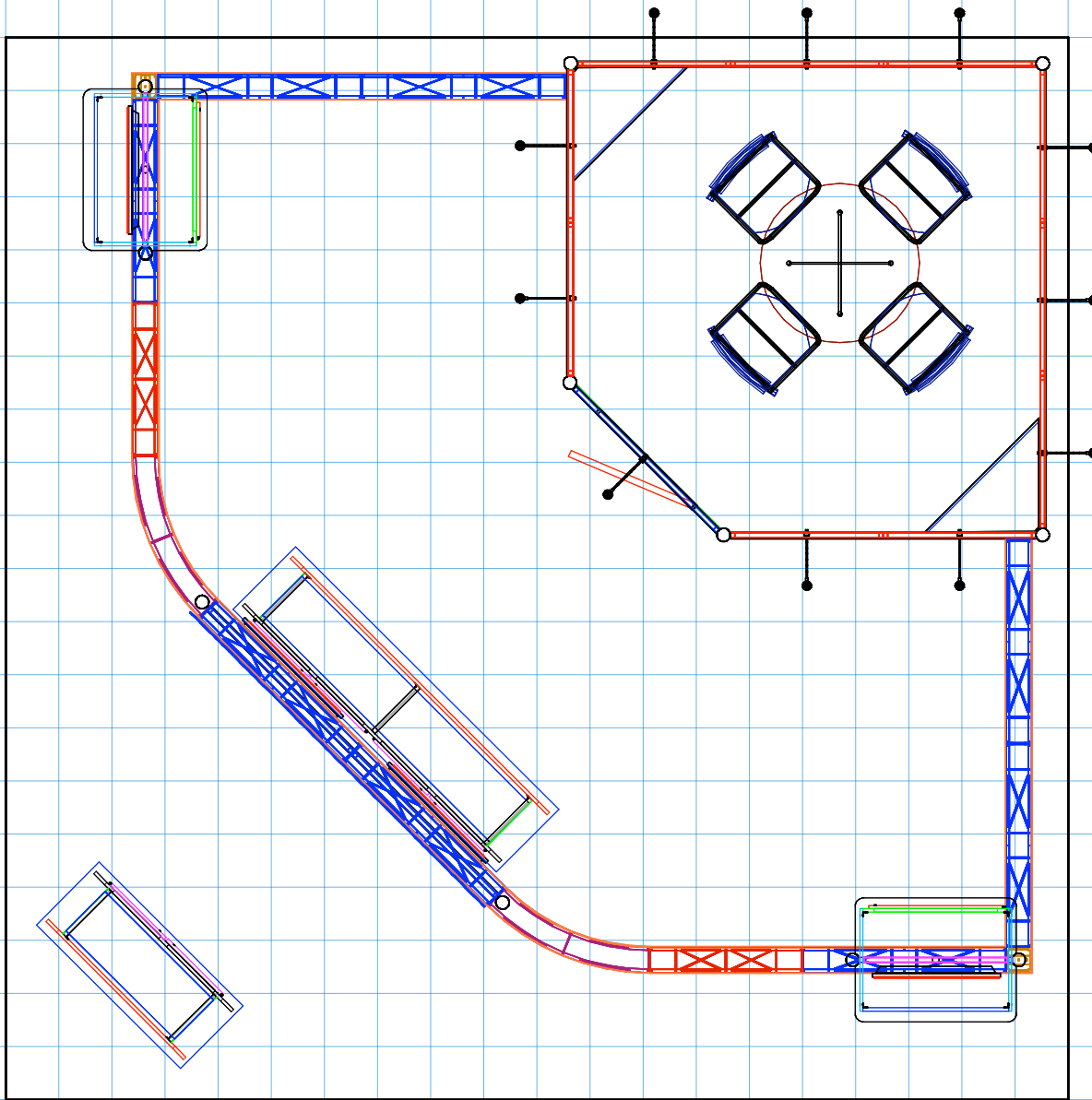


PREMIUM CIGAR
19 74
**QUESADA
KEG**
IMPORTED
EST. NICARAGUA

Q
PUBLIC Quesada MATHE
40th
ANNIVERSARY

Quesada Cigars

Quesada Cigars



DRAWN BY: NG

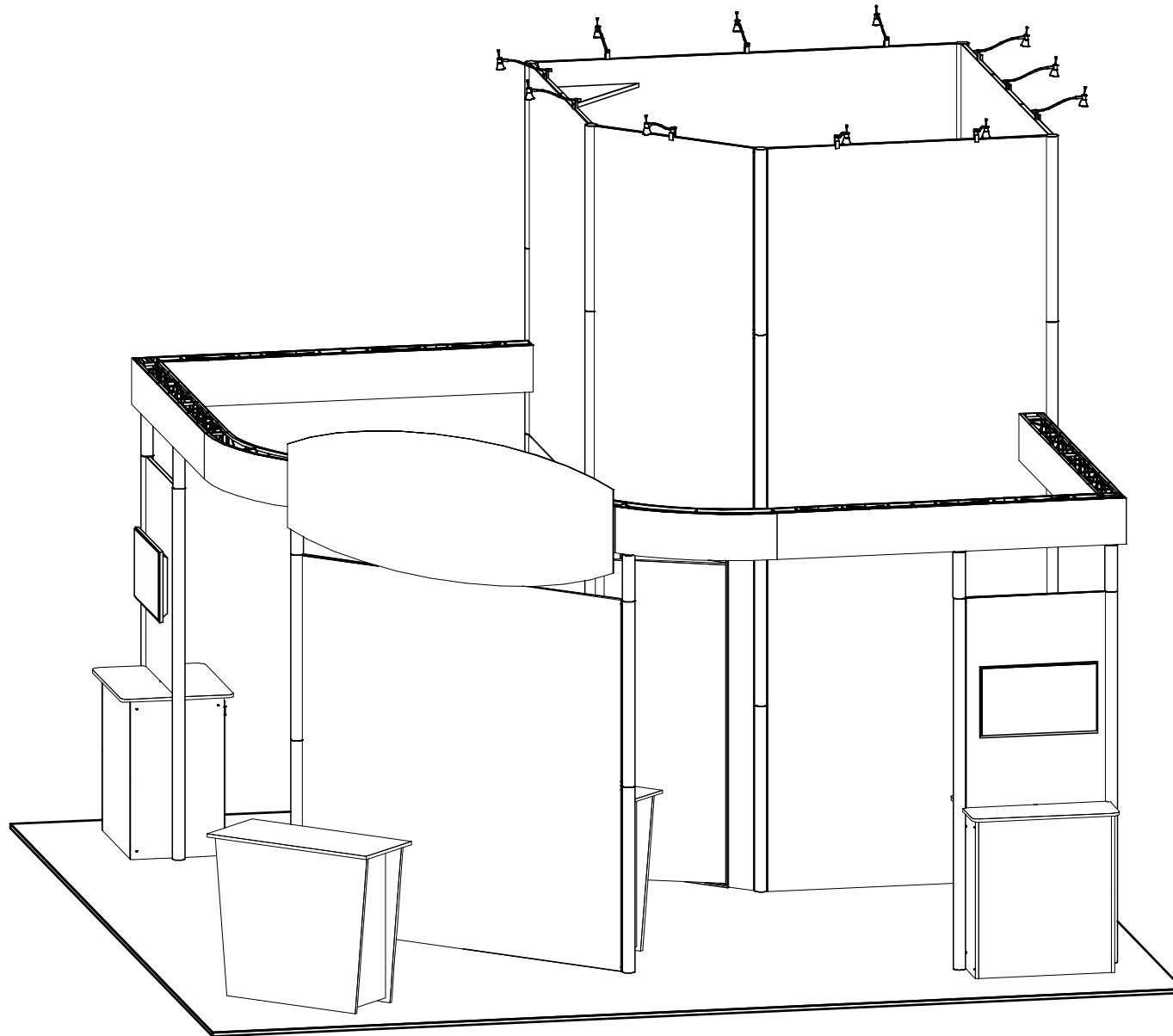
DESIGN : EV2-LL17

DATE: 12/28/22

REFERENCE: 20X20

© 2022

The designs shown herein are protected by copyright and other laws. This document is to be maintained in confidence. No portion of the information or design shown herein may be reproduced, electronically or otherwise, nor may any display be made from this design without written consent.



DRAWN BY: NG

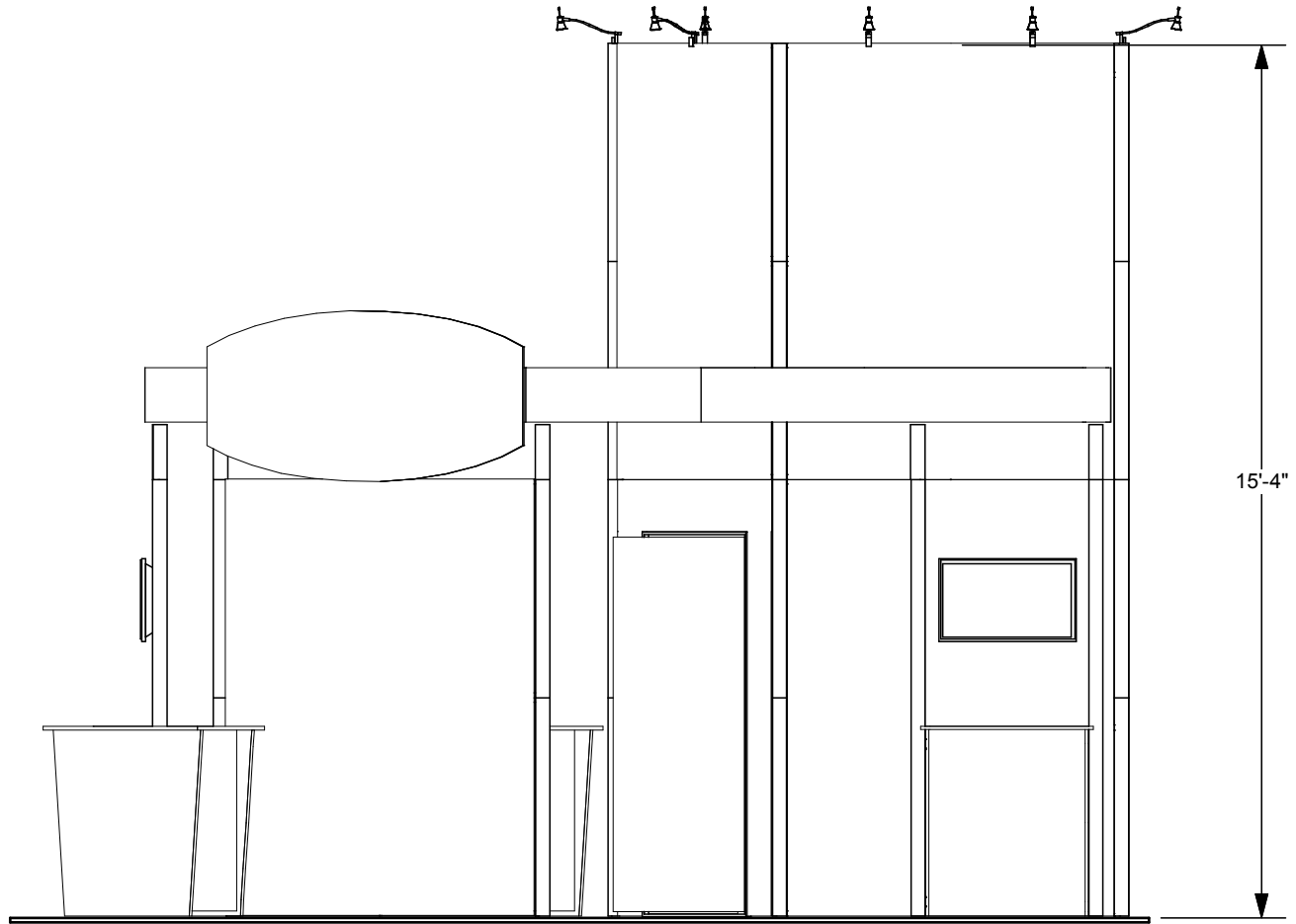
DESIGN : EV2-LL17

DATE: 12/28/22

REFERENCE: 20X20

© 2022

The designs shown herein are protected by copyright and other laws. This document is to be maintained in confidence. No portion of the information or design shown herein may be reproduced, electronically or otherwise, nor may any display be made from this design without written consent.



DRAWN BY: NG

DESIGN : EV2-LL17

DATE: 12/28/22

REFERENCE: 20X20

© 2022

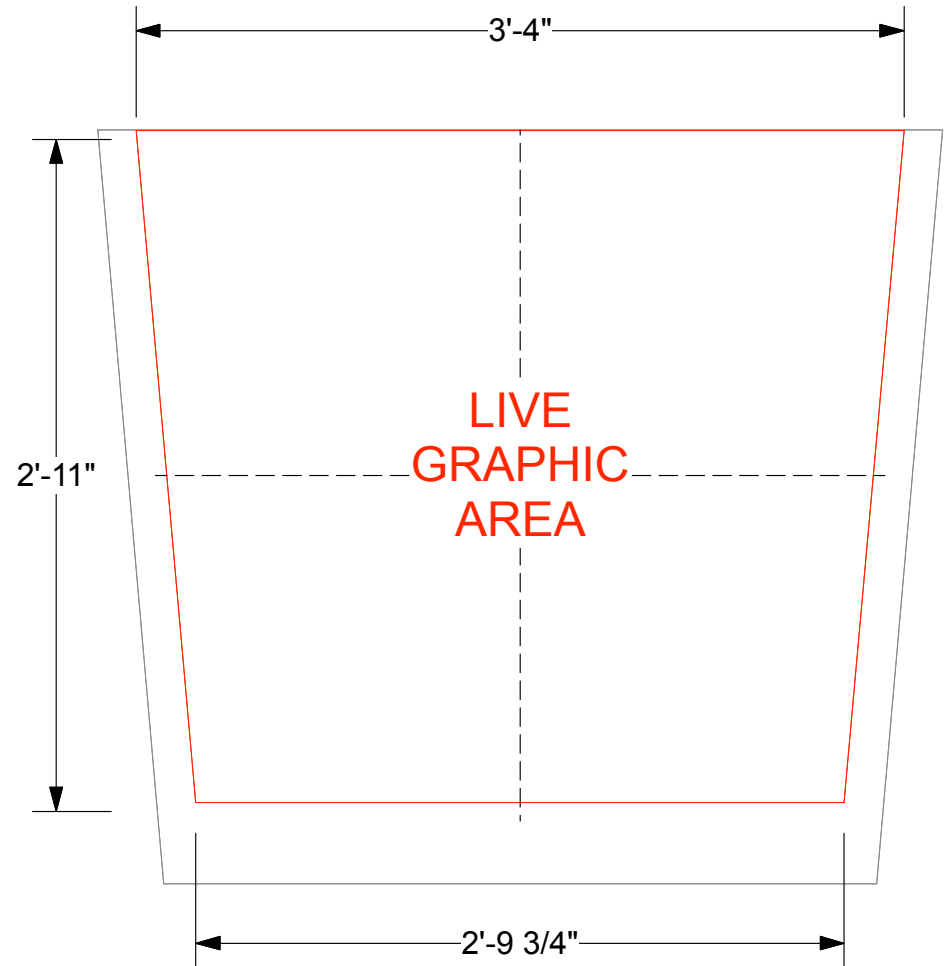
The designs shown herein are protected by copyright and other laws. This document is to be maintained in confidence. No portion of the information or design shown herein may be reproduced, electronically or otherwise, nor may any display be made from this design without written consent.

EV2 STANDALONE COUNTER - STANDARD FRONT GRAPHIC SPECIFICATIONS

Graphic will be created as a low-tac adhesive fabric decal, **for one time use application.**
 Graphics must be reprinted for additional events.

Template shows maximum live graphic size of 40"w (at top) x 35"h.
 Profile cut art may be smaller, and will be centered on counter front.
 Vector cut lines must be provided in supplied art files for profile cut decals.
 White laminate counter front will be visible around decal.

Please provide .5" bleed at all edges in art files.



- COUNTER, 44"w x 39.25"h total dimension of front
- MAXIMUM LIVE GRAPHIC AREA, 40"w x 35"h



DRAWN BY: NG

DESIGN : EV2 Graphic Production Materials

DATE: 8/28/17

REFERENCE: EV2 - STNDLN © Trussworks 2017

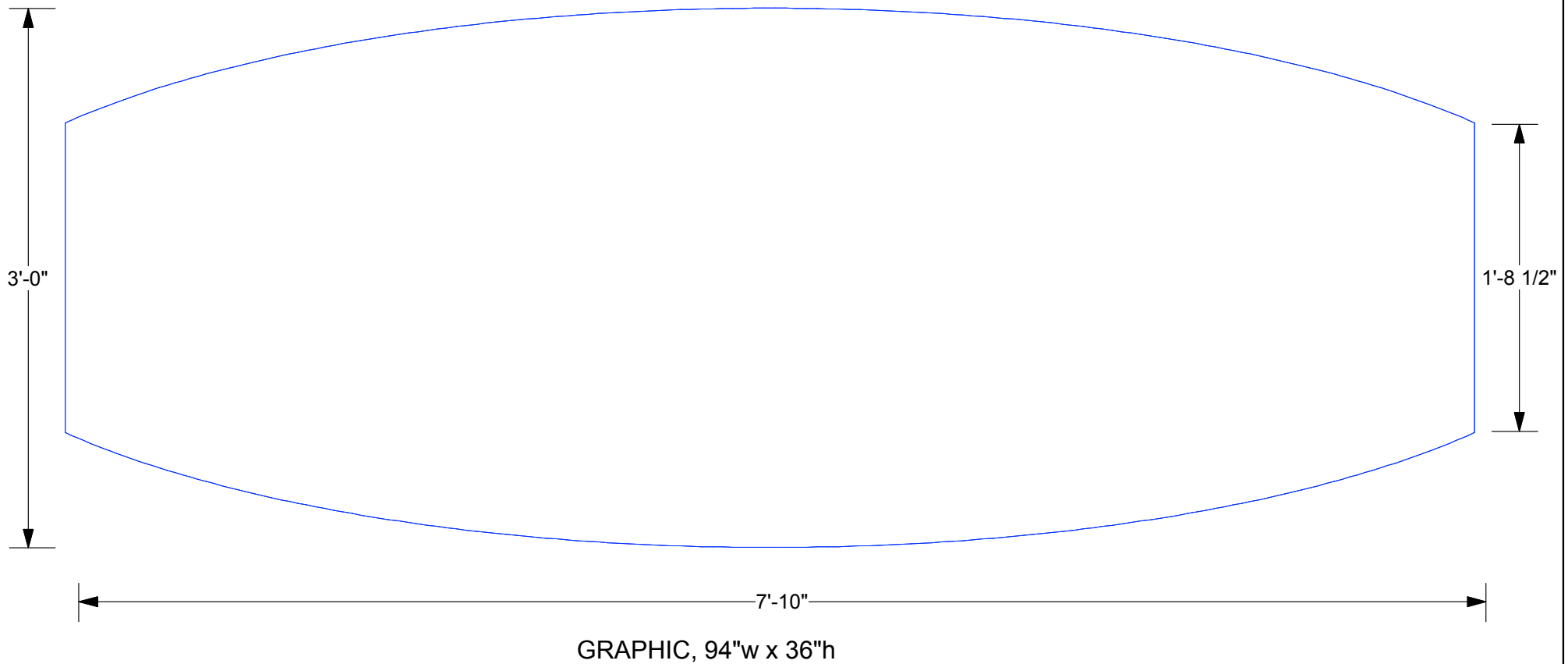
The designs shown herein are the proprietary property of Trussworks and protected by copyright and other laws. This document is to be maintained in confidence. No portion of the information or design shown herein may be reproduced, electronically or otherwise, nor may any display be made from this design without written consent from Trussworks.

EV2 LL17 - PROFILE CUT HEADER GRAPHIC SPECIFICATIONS

Graphics will be created as direct print to 1/4" sintra, with magnet strips to the back. White or black sintra will be visible at back edges of graphic.

Template shows live graphic size of 94"w x 36"h, and 20.5"w at left and right edges.

Please provide .5" bleed at all edges in art files.



DRAWN BY: NG

DESIGN : EV2 Graphic Production Materials

DATE: 7/28/16

REF: EV2 - STNDLN - EDGE

© Trussworks 2016

The designs shown herein are the proprietary property of Trussworks and protected by copyright and other laws. This document is to be maintained in confidence. No portion of the information or design shown herein may be reproduced, electronically or otherwise, nor may any display be made from this design without written consent from Trussworks.