

EV2 - MM59 • Kit Information

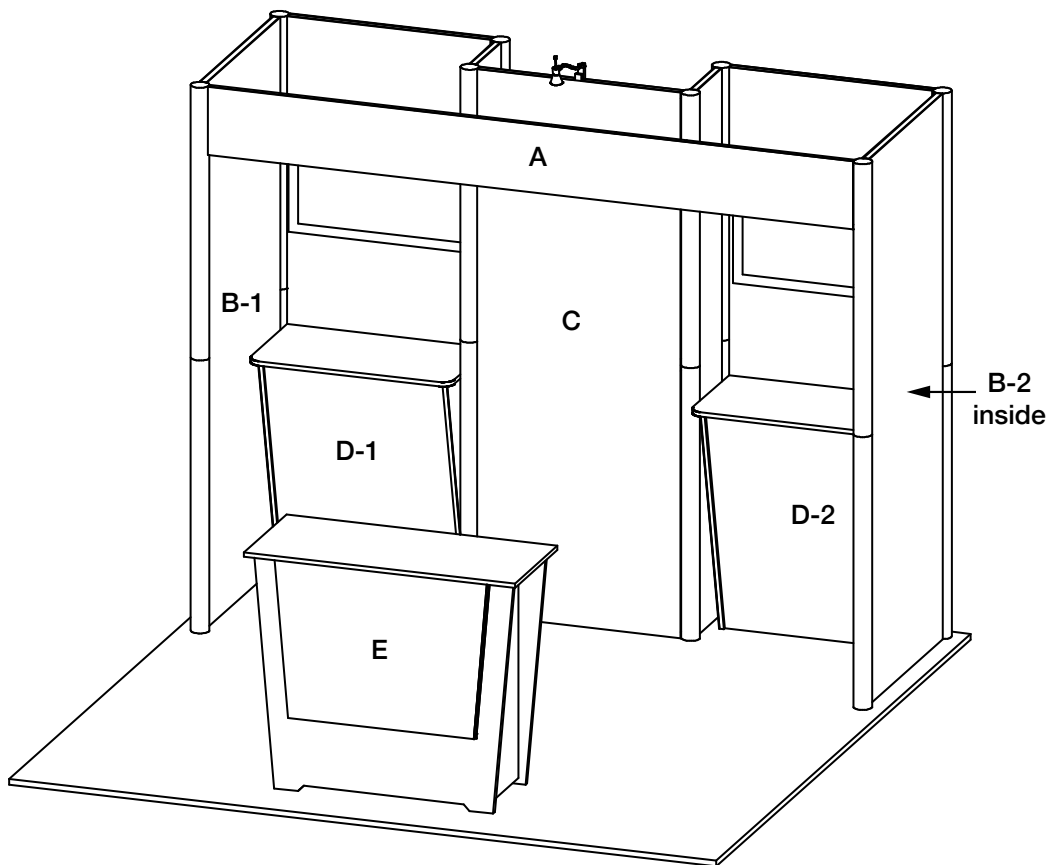
10' x 10' INLINE • Total height 7'8"

KIT AS SHOWN INCLUDES

- (2) In-wall monitor mount, accommodates up to 42" w monitor. Height is not adjustable, position may vary based on your model.
- (1) Main graphic with dramatic silhouette lighting at bottom edge. Light is LED adjustable color.
- (4) arm lights.
- (2) "EV2" wall counter, 34.5" w x 21" d black laminate top, white laminate sides.
- (1) "EV2" standalone counter, 46" w x 20" d black laminate top, silhouette lit front graphic, choice of sintra sides or graphics.

CHOICE of black, white or gray sintra provided standard for all solid infill walls that do not have graphics, unless described otherwise.

- * White laminate standard for EV2 Wall Counter sides. Front may be choice of sintra colors or printed graphic.
 - White laminate standard for EV2 Standalone Counter front. Sides may be choice of sintra colors or printed rigid graphic.
- Consult your account rep for options. Additional elements, merchandising and graphics are available.



STANDARD GRAPHICS PACKAGE

- A. - (1) 109.25" w x 11.5" h, flexible.
- B. - (2) 34.5" w x 92" h, rigid.
- C. - (1) 34.5" w x 92" h, rigid.
- D. - (2) 30.5" w x 40" h, standard or backlit graphic front, flexible, fabric or rigid. * White solid alternate.
- E. - (1) 36" w x 26.5" h, rigid. Profile cut, silhouette lit at bottom and sides. Refer to template provided.

KIT PACKAGE PRICING DOES NOT INCLUDE chairs, benches, tables, computers, monitors/cables, and carpet. Additional elements, merchandising and graphics are available through your account representative.

Please follow our graphic file submission guidelines for all printed elements to avoid resubmission requests and delay. Allow at least 10 business days for graphic production.



QARDIO

Q

Q

QARDIO
STATE OF THE HEART TECHNOLOGY™

QARDIO



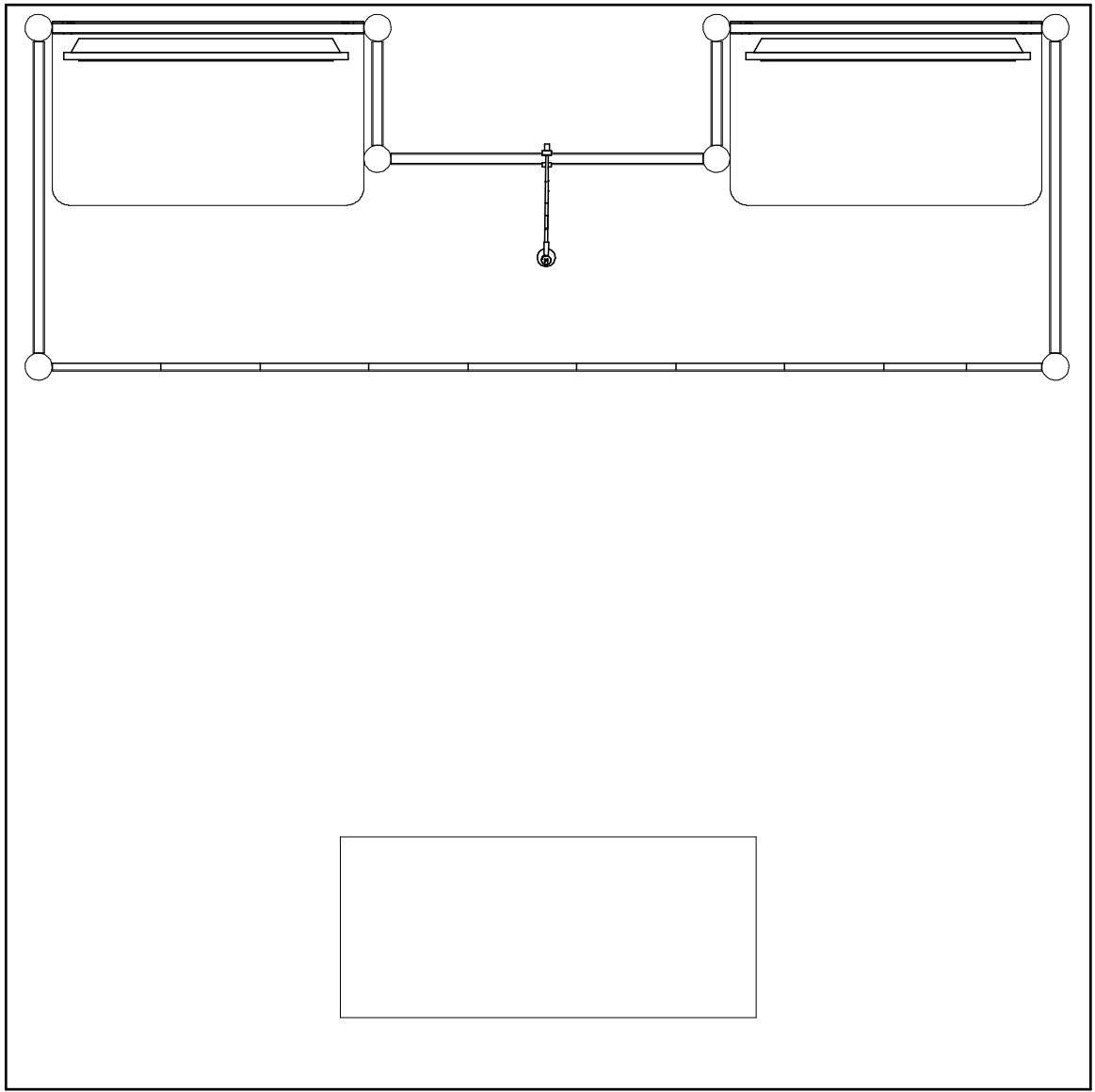
QARDIO
STATE OF THE HEART TECHNOLOGY™

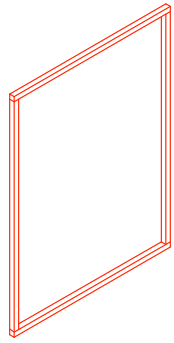


QARDIO

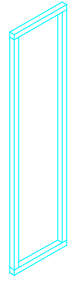


QARDIO
STATE OF THE HEART TECHNOLOGY™





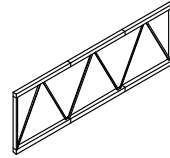
34.5"w x 46"h (10)



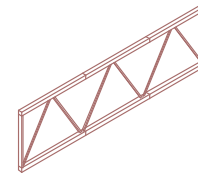
11.5"w x 46"h (4)



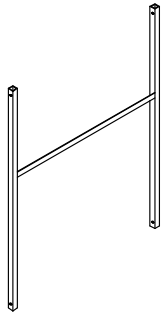
46"h Hyperlite (16)



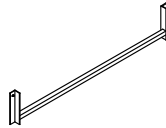
EZ12 - A3F (2)



EZ12 - A3.5F (1)



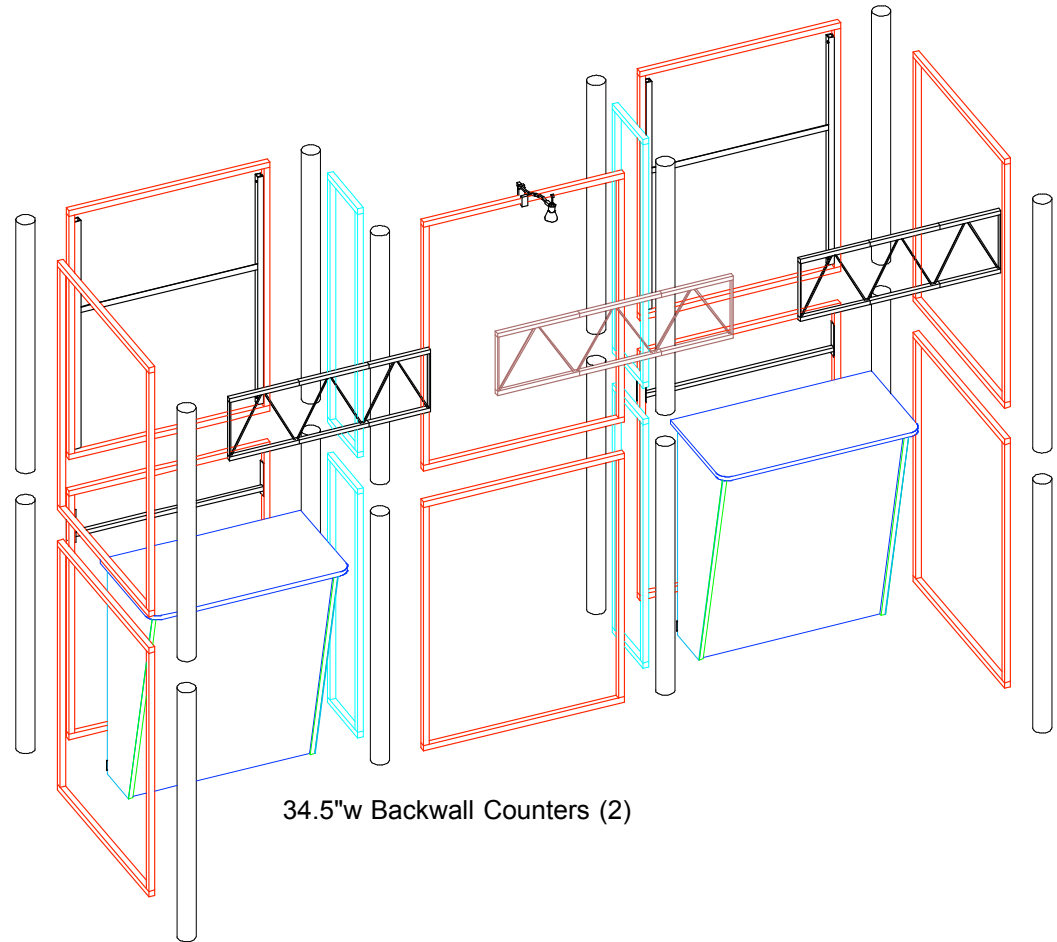
34.5"w Frame TV Mount (2)



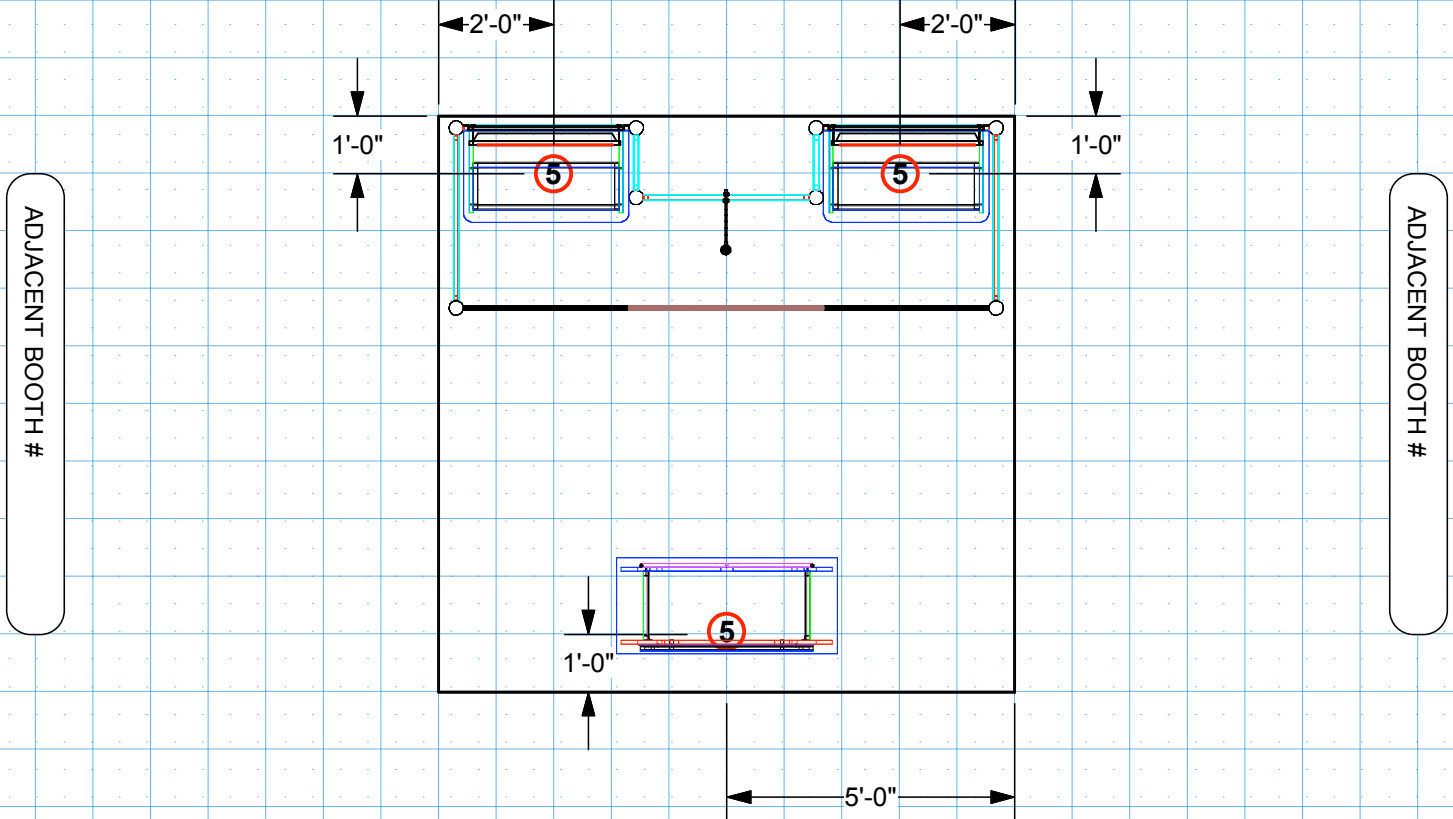
34.5"w H-frame (2)



BDLT (1)



34.5"w Backwall Counters (2)



Electrical Key and Information

- ⑤ 5 Amps
- ⑩ 10 Amps
- ②① 20 Amps

* This document shows power requirements for supplied exhibit lighting.
 If additional power is needed, please mark the locations above using this key.
 Send with your power order to the show and to your Trussworks account representative.

Notes