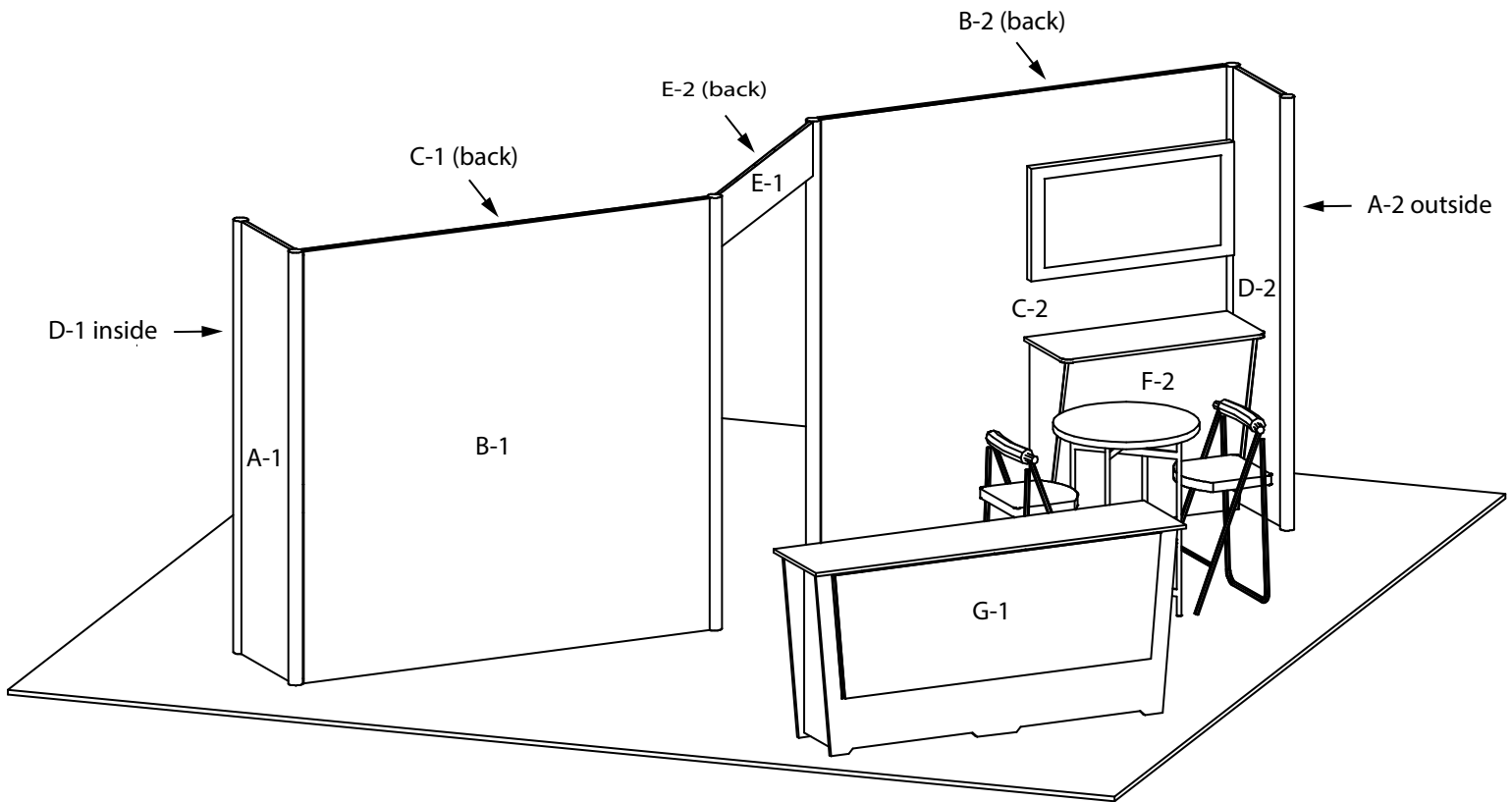


KIT AS SHOWN INCLUDES

- (1) "Split wall" configuration with a built in workstation on opposite sides.
- (2) "EV2" wall counters, 46"w x 19"d black laminate top, white laminate sides.
- (1) "EV2" double wide standalone counter, 7'w x 20"d black laminate top, silhouette lit front graphic, choice of sintra sides or graphics.
- (1) Double sided graphic header archway

CHOICE of black, white or gray sintra provided standard for all solid infill walls that do not have graphics, unless described otherwise.

- * White laminate standard for EV2 Wall Counter sides. Front may be choice of sintra colors or printed graphic.
 - * White laminate standard for EV2 Standalone Counter front. Sides may be choice of sintra colors or printed rigid graphic.
- Consult your account rep for options. Additional elements, merchandising and graphics are available.



STANDARD GRAPHICS PACKAGE

- A. - (2) 23"w x 92"h, rigid.
- B. - (2) 92"w x 92"h, rigid.
- C. - (2) 92"w x 92"h, rigid.
- D. - (2) 23"w x 92"h, rigid.
- E. - (2) 57.5"w x 11.5"h, flexible.
- F. - (2) 42"w x 40"h, standard or backlit graphic front, flexible, fabric or rigid. * White solid standard.
- G. - (2) 74"w x 26.5"h, rigid. Profile cut, silhouette lit at bottom and sides. Refer to template provided.

KIT PACKAGE PRICING DOES NOT INCLUDE chairs, benches, tables, computers, monitors/cables, and carpet.
Additional elements, merchandising and graphics are available through your account representative.
Please follow our graphic file submission guidelines for all printed elements to avoid resubmission requests and delay.
Allow at least 10 business days for graphic production.

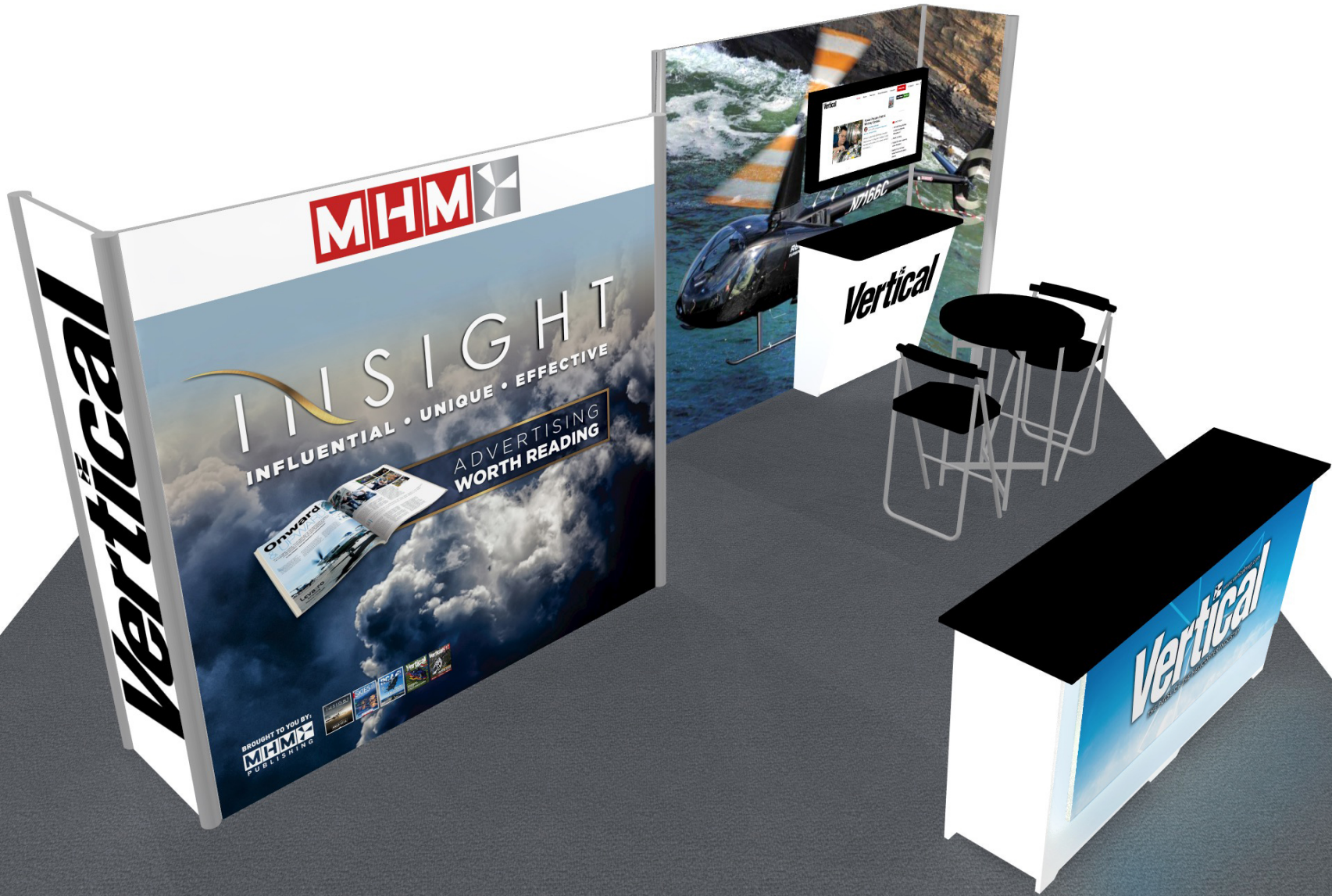


INSIGHT

MHM

PUBLISHING





MHM

Vertical

INSIGHT
INFLUENTIAL • UNIQUE • EFFECTIVE
ADVERTISING
WORTH READING

BROUGHT TO YOU BY:
MHMP
PUBLISHING



Vertical

Vertical



INSIGHT

INFLUENTIAL • UNIQUE • EFFECTIVE



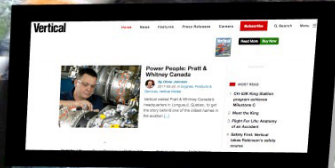
ADVERTISING
WORTH READING

Vertical

www.verticalmag.com

THE PULSE OF THE HELICOPTER INDUSTRY

Vertical





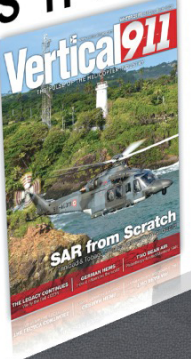
Vertic





INSIGHT

MHM
PUBLISHING



Vertical

Vertical
THE MAGAZINE FOR HELICOPTERS

INSIGHT

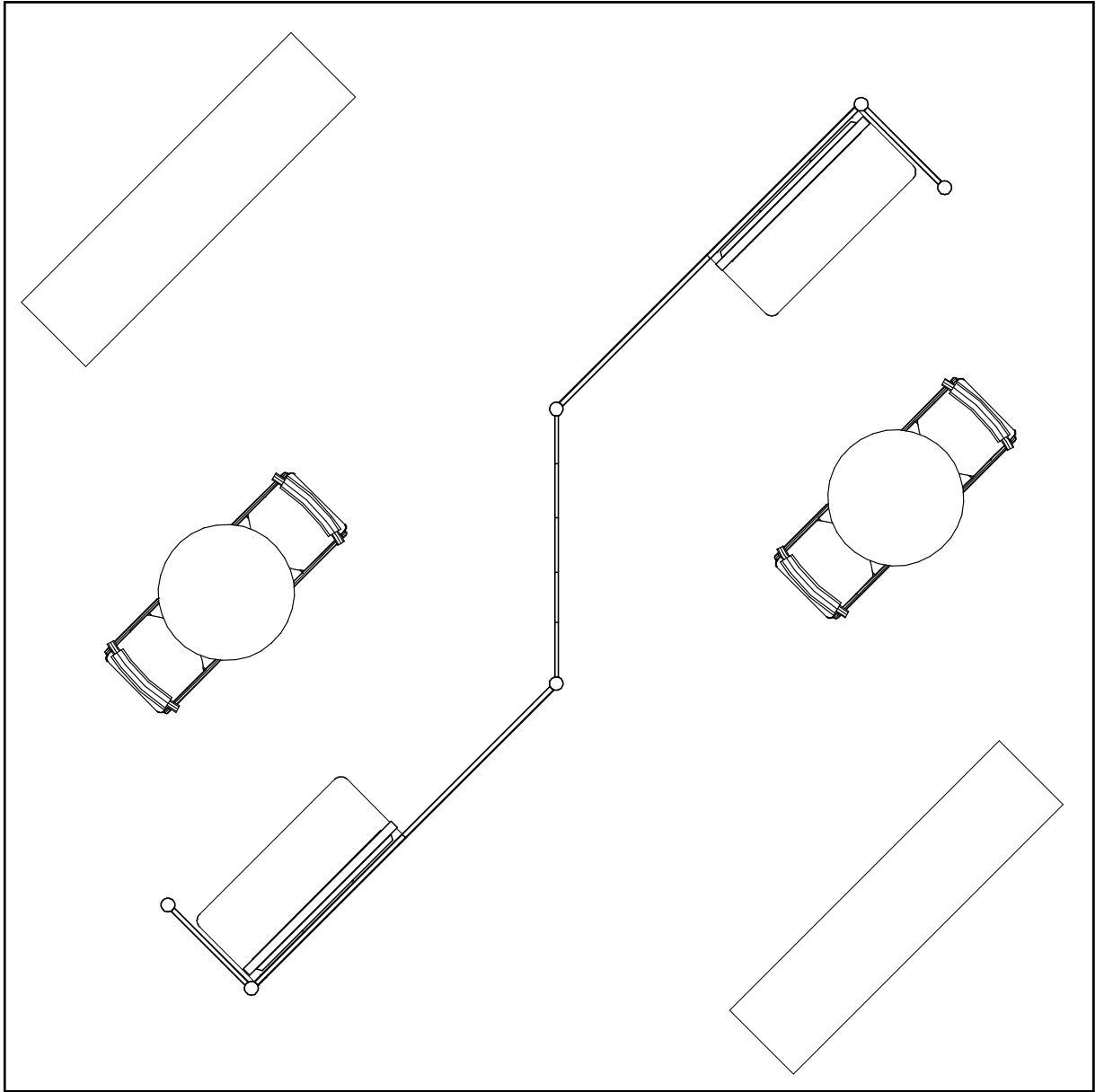
MHM PUBLISHING

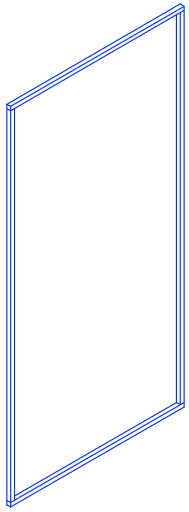


Vertical

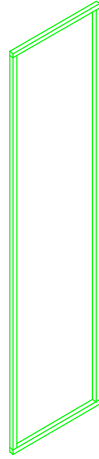


Vertical
www.verticalmag.com
THE PULSE OF THE HELICOPTER INDUSTRY

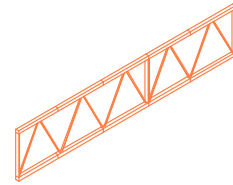




46"w x 92"h Frame (4)



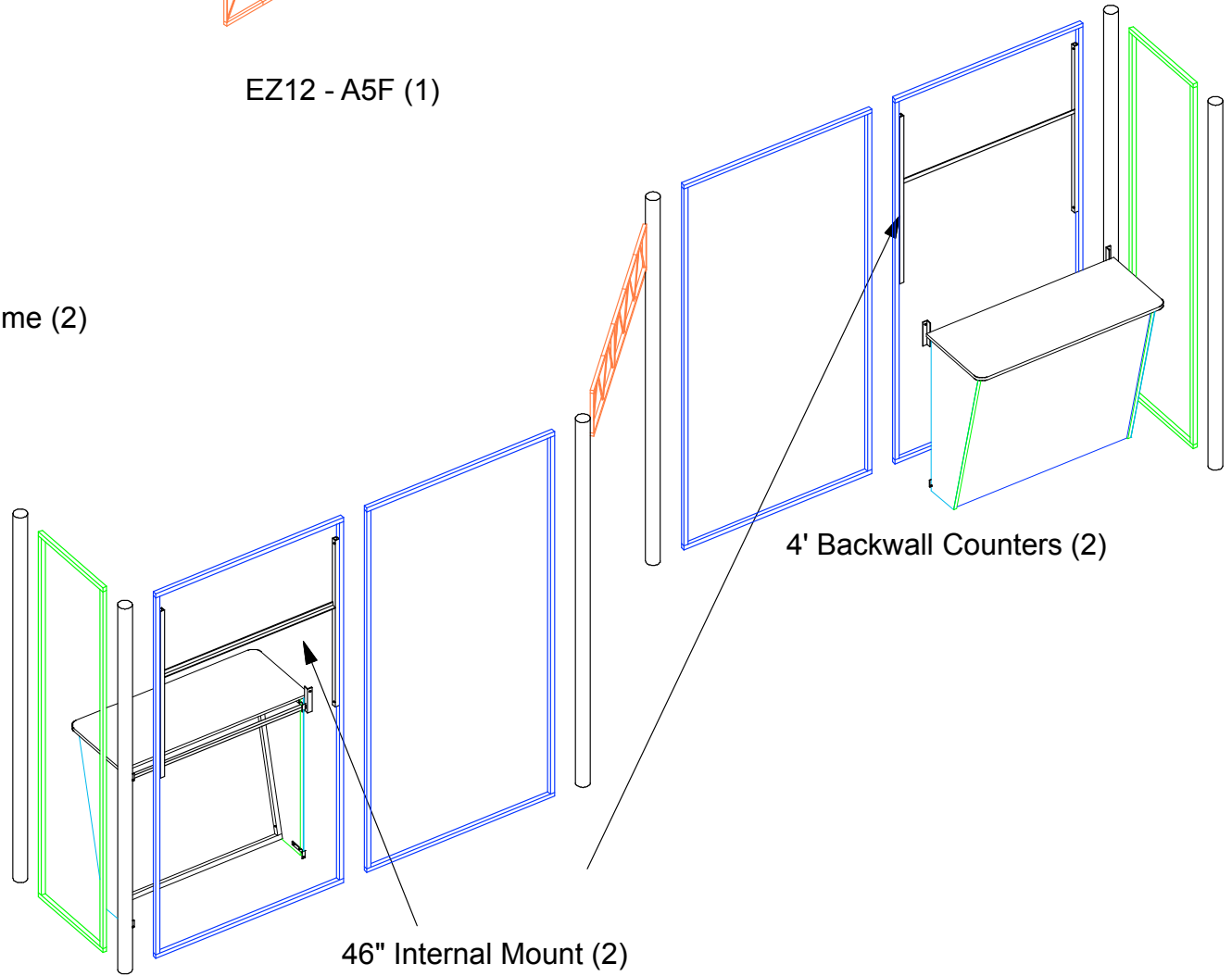
23"w x 92"h Frame (2)



EZ12 - A5F (1)



92" Hyperlite (6)



4' Backwall Counters (2)

46" Internal Mount (2)



DRAWN BY: LH

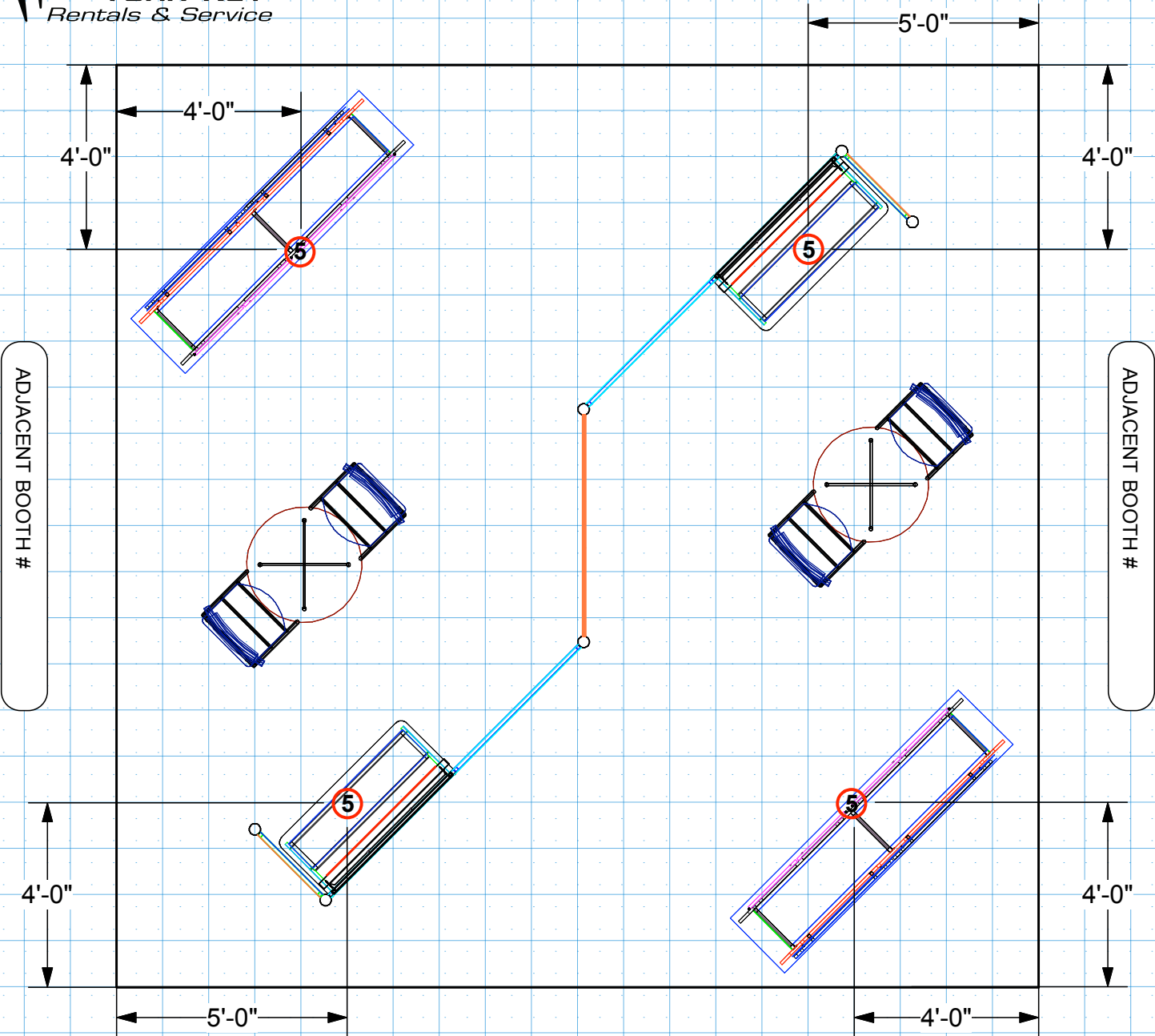
DESIGN : EV2-LL37

DATE: 04/07/17

REFERENCE: 20X20

© Trussworks 2017

The designs shown herein are the proprietary property of Trussworks and protected by copyright and other laws. This document is to be maintained in confidence. No portion of the information or design shown herein may be reproduced, electronically or otherwise, nor may any display be made from this design without written consent from Trussworks.



Electrical Key and Information

- 5** 5 Amps
- 10** 10 Amps
- 20** 20 Amps

* This document shows power requirements for supplied exhibit lighting.
 If additional power is needed, please mark the locations above using this key.
 Send with your power order to the show and to your Trussworks account representative.

Notes