



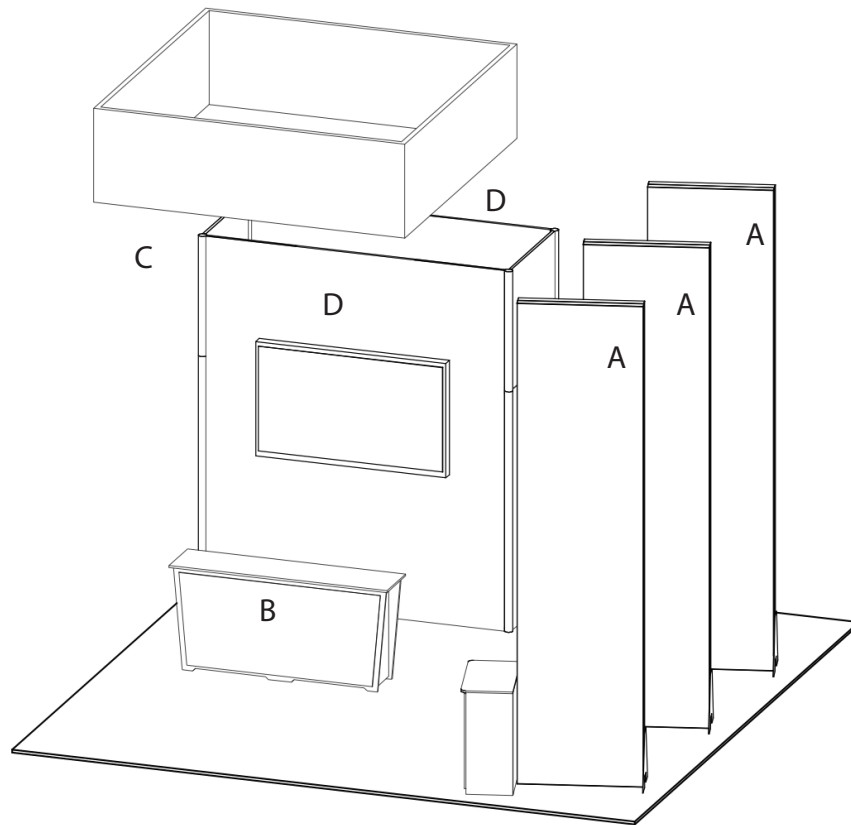
20x20 LIGHTBOX rental kit to include:

- (3) 15'4" tall x 46" w Doublesided lightboxtowers
- (1) 9'7" x 46" x 11'6" high storage closet
- (3) 3' "locking Box Counters
- (1) In wall monitor mount
- (1) 7' wide EV2 locking counter

CHOICE of black, white, or gray sintra provided standard for all solid infill walls that do not have graphics, unless described otherwise

*White laminate standard for EV2 wall counter sides and standalone counter front and sides

Consult your account rep for options. Additional elements, merchandising and graphics are available



GRAPHICS PACKAGE A TO INCLUDE

A. - (6) 184" x 46" h backlit fabric graphic required (both sides of each lightbox tower)

B. - (1) 78" w x 35" h maximum size, SINGLE USE "low-tac" adhesive, front. Refer to template provided.

White laminate will be visible 2" at the edges or behind any smaller profile cut graphics. (Vector art/cut lines must be provided for profile.)

GRAPHICS PACKAGE B TO INCLUDE

Package A, Plus

C. - (1) 46" w x 138" h Sintra Graphic (Aisle side of storage tower)

D. - (2) 115" w x 138" Sintra Graphic (front and back of tower)

KIT PACKAGE PRICING DOES NOT INCLUDE chairs, benches, tables, computers, monitors/cables, and carpet. Additional elements, merchandising and graphics are available through your account representative.

Please follow our graphic file submission guidelines for all printed elements to avoid resubmission requests and delay. Allow at least 10 business days for graphic production.

AMERICAN POLICYHOLDER
ASSOCIATION

AMERICAN POLICYHOLDER
ASSOCIATION



AMERICAN POLICYHOLDER
ASSOCIATION

OUR MISSION

THE AMERICAN POLICYHOLDER ASSOCIATION IS A NON-PROFIT 501(C)(3) WATCHDOG ORGANIZATION THAT PROMOTES INTEGRITY, HONESTY AND BEST PRACTICES IN THE PROPERTY-CASUALTY SECTOR OF THE INSURANCE INDUSTRY.

Health, protection of property and preservation of public safety are, and should remain, the paramount concerns of the insurance industry.

Learn More

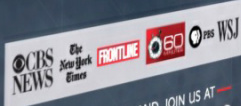
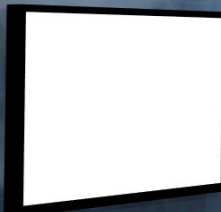
OUR OBJECTIVES

WE ACCOMPLISH OUR MISSION BY:

- **Advocating for Policyholders**
- **Monitoring Industry Practices**
- **Providing Education and Resources**

Learn More

PUBLICIZED CARRIER CRIMES



FIND OUT MORE AND JOIN US AT
APASSOCIATION.ORG



AMERICAN POLICYHOLDER ASSOCIATION

PUBLICIZED CARRIER CRIMES



CBS NEWS The New York Times FRONTLINE 60 PBS WSJ

FIND OUT MORE AND JOIN US AT



AMERICAN POLICYHOLDER
ASSOCIATION



THE
CARRIER CRIME
STOPPER

4
carrie
\$1,0
CA
14
REOP
\$7
REST
KEY
E
A
Fraudulent engineering report?

Claim denied by fraud?

YOUR
PRIVATE BODYGUARD
AGAINST FRAUD

TELL THEM
I'M REPORTING YOU
TO THE APA

port them to the authorities.

AMERICAN POLICYHOLDER ASSOCIATION



THE CARRIER CRIME STOPPER

Claim denied by fraud?

YOUR PRIVATE BODYGUARD AGAINST FRAUD

Fraudulent engineering report?

TELL THEM I'M REPORTING YOU TO THE APA

Report them to the authorities.



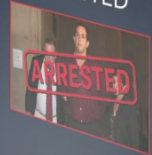
Disclosures of carrier fraud resulted in:

\$1,000,000 CARRIER FINE

144,000 REOPENED CLAIMS

\$700 MILLION RESTITUTION PAID

KEY ENGINEERING EXECUTIVE ARRESTED



4 PART STRATEGY

STEP 1



LOBBY

STEP 2



IDENTIFY

STEP 3



PROSECUTE

STEP 4



PUBLICIZE

AMERICAN POLICYHOLDER
ASSOCIATION

AMERICAN POLICYHOLDER
ASSOCIATION



4 PART STRAT

STEP 1



LOBBY

STEP 2



IDENTIF

STEP 3



PROSECU

STEP 4



PUBLICIZ



Disclosures of
carrier fraud resulted in:

\$1,000,000
CARRIER FINE

144,000
REOPENED CLAIMS

\$700 MILLION
RESTITUTION PAID

KEY ENGINEERING
EXECUTIVE
ARRESTED



THE
CARRIER CRIME
STOPPER

Claim denied by fraud?

YOUR
PRIVATE BODYGUARD
AGAINST FRAUD

Fraudulent engineering report?

TELL THEM
I'M REPORTING YOU
TO THE APA

Report them to the authorities.



AMERICAN POLICYHOLDER
ASSOCIATION

THE CARRIER CRIME STOPPER

WE REPORT CARRIER, ENGINEER AND ADJUSTER FRAUD

YOU PURSUE YOUR
INSURANCE CLAIM

WE LOBBY, IDENTIFY, REPORT &
PUBLICIZE CARRIER CRIMES

4 PART STRATEGY



STEP 1
LOBBY



STEP 2
IDENTIFY



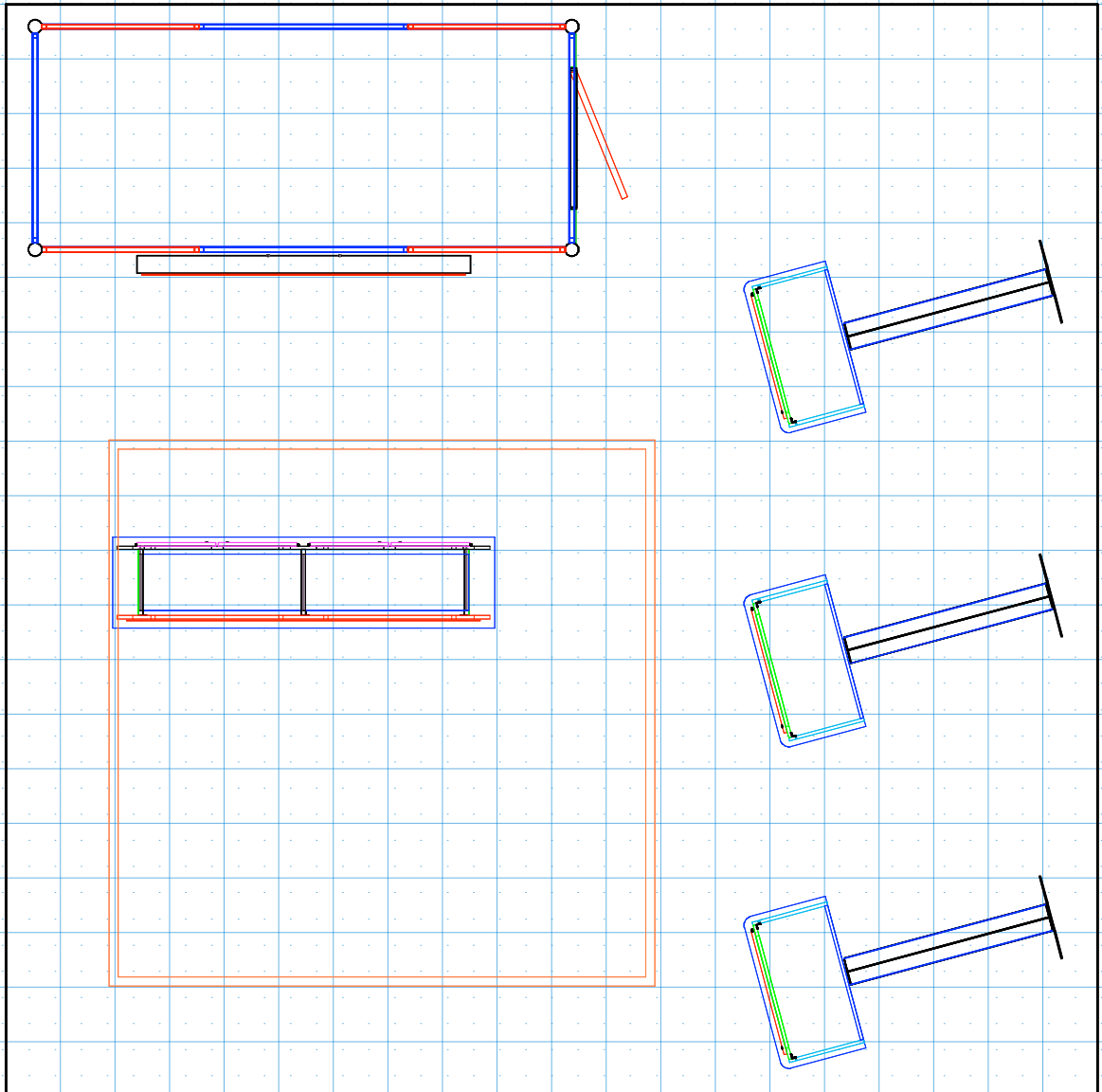
STEP 3
PROSECUTE



STEP 4
PUBLICIZE

USING THIS APA 4 PART STRATEGY, APA MEMBERS HAVE:

- Lobbied Attorney Generals, District Attorneys, and Insurance Commissioners across the US
- Lead to the arrest and criminal conviction of a key engineering executive
- Lead to a Million dollar fine against a carrier for fraud
- Lead to the reopening of 144,000 claims
- Lead to \$700 Million in restitution paid



DRAWN BY: LH

DESIGN : LB-LL13

DATE: 04/08/20

REFERENCE: 20X20

© 2020

The designs shown herein are protected by copyright and other laws. This document is to be maintained in confidence. No portion of the information or design shown herein may be reproduced, electronically or otherwise, nor may any display be made from this design without written consent.



DRAWN BY: LH

DESIGN : LB-LL13

DATE: 04/08/20

REFERENCE: 20X20

© 2020

The designs shown herein are protected by copyright and other laws. This document is to be maintained in confidence. No portion of the information or design shown herein may be reproduced, electronically or otherwise, nor may any display be made from this design without written consent.

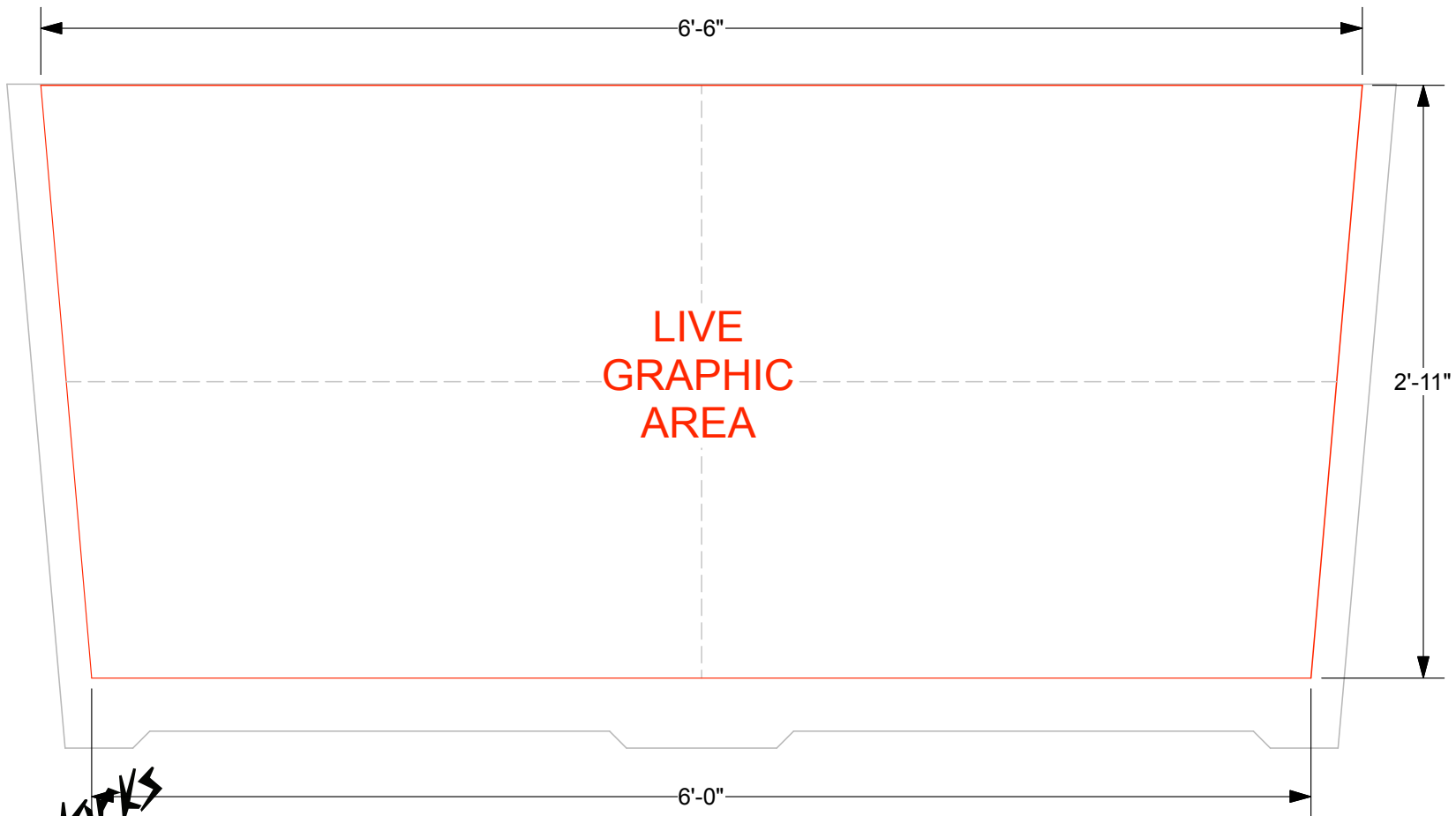
EV2 STANDALONE DOUBLE WIDE COUNTER - STANDARD FRONT GRAPHIC SPECIFICATIONS

Graphic will be created as a low-tac adhesive fabric decal, **for one time use application**.
Graphics must be reprinted for additional events.

Template shows maximum live graphic size of 78"w (at top) x 35"h.
Profile cut art may be smaller, and will be centered on counter front.
Vector cut lines must be provided in supplied art files for profile cut decals.
White laminate counter front will be visible around decal.

Please provide .5" bleed at all edges in art files.

- COUNTER, 82"w x 39.25"h total dimension of front
- MAXIMUM LIVE GRAPHIC AREA, 78"w x 35"h



DRAWN BY: NG

DESIGN : EV2 Graphic Production Materials **DATE:** 1/26/17 **REFERENCE:** EV2 - STNDLN DBLWIDE © Trussworks 2017

The designs shown herein are the proprietary property of Trussworks and protected by copyright and other laws. This document is to be maintained in confidence. No portion of the information or design shown herein may be reproduced, electronically or otherwise, nor may any display be made from this design without written consent from Trussworks.